



**SANY**  
AMERICA INC.



# SRC840

Maximum Capacity @ Radius  
40 US Ton @ 10 ft

Main Boom  
32.8' – 103.4'

Max Tip Height W/extension  
155.5 ft

Boom Extension  
26' – 45"

Hoist Max Line Pull  
15,000 lbs

Wire Rope Diameter  
5/8 in.

Weight  
71,209 lbs

Length  
39' – 10.5"

Max Gradeability  
100% GVW

Height  
11' – 2"

Width  
8' – 7.5"

Tail Swing  
12' – 11"



**SANY**  
AMERICA INC.

318 Cooper Cir., South  
Peachtree City, GA 30269  
Tel: 678-251-2810  
Fax: 770-631-7731

[www.sanyamerica.com](http://www.sanyamerica.com)



## SRC840

### Quick Reference Guide

- Engine: Cummins Model QSB6.7 160 HP @ 2500 rpm
- Hydraulic system Parker Piston Pump and Husco Valves
- SANY designed LMI with large display screen
- AxleTech Axles and Dana Powershift Transmission
- 103 Foot Four Section Main Boom and 26' – 45' Extension
- Key standard features
  - Large Cab
  - Horsepower Limited Pump
  - Hydraulic Joystick Controls
  - Post Compensated Valves
  - SANY 24 Volt Electrical Control System

# SPECIFICATIONS

## ENGINE

Cummins Model QSB.6.7 Tier 3  
 Power.....260 HP (119 Kw)  
 Fuel Tank .....75 Gal. (284L)

## HYDRAULIC SYSTEM

Parker horsepower limited piston pump with Husco post compensated valves provides multifunction load sharing and fine control. Energy saving system offers a lower operational cost. Oil cooler and pressure filter to ensure long component life.

## CONTROLS

Hydraulic pilot operated joysticks produce smooth variable control of crane functions. Drum rotation indicators are incorporated in the handles. Steering column mounted turn signals and transmission control. Foot pedals for swing brake, telescope, service brake and accelerator. Hi-Low hoist speed control switch in handle for ease of use. SANY electrical system includes Load Moment Limiter (LML) and lockout with CAN bus for reduced complexity. Built in diagnostics and engine instrumentation display. Electrical system is 24 volt.

## SWING SYSTEM

The swing system can rotate 360 degrees continuously in both directions. Independent swing circuit eliminates function interaction. Planetary drive offers free swing or automatic brake application for operator preference. Maximum speed 2.7 RPM with a 12'-11" tailswing.

## HOISTS

Braden main and auxiliary hoists are independently driven and controlled by the joysticks.  
 Rope Diameter.....5/8"  
 Max Line Speed .....460 ft/min  
 Max Line Pull .....15000  
 Drum Capacity .....770 ft

## COUNTERWEIGHT

Fixed 8,818 pound counterweight.

## OPERATORS CAB

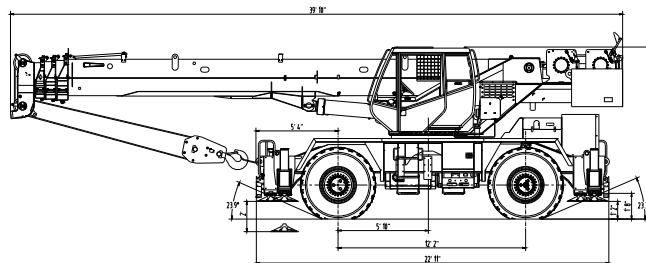
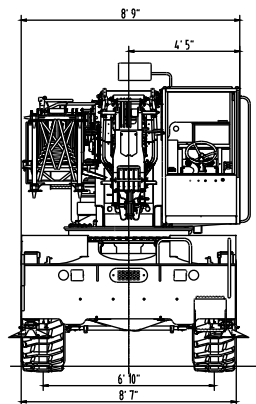
Spacious ergonomic cab with all steel construction. Optimum visibility, tinted safety glass throughout. Opening skylight with visor and wiper system. Diesel heater and defroster. Sliding door on the left hand side and a framed sliding window on the right hand side. Acoustical foam to absorb noise and insulate the cab. Deluxe six-way adjustable seat is equipped with mechanical suspension and includes arm rests and head rest.

## CARRIER

Equipped with hydraulic powered four way steering for excellent maneuverability. Three position outriggers provide 10" of ground penetration and 20.2 ft of extension to level the crane. Superior accessibility from ground for ease of maintenance. Earthmover style 20.5 X 25 tires provide excellent flotation for off road use. Dana powershift transmission includes 6 speeds forward and reverse with a maximum speed of 25 MPH. AxleTech drive steer axles are supplied with hydraulic disk brakes and a spring applied parking brake.

## BOOM

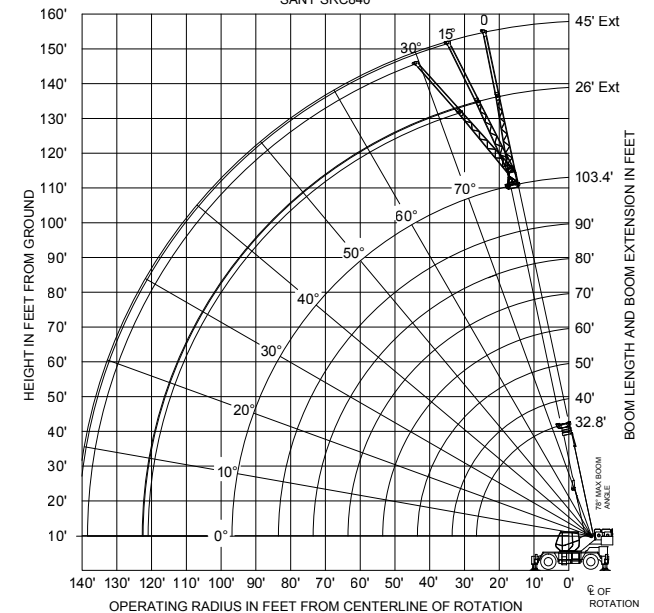
Four section sequenced synchronized full power boom. (32.8' – 103.4') Boom elevation -2° to 78° with a maximum tip height of 111 ft. Side mounted bifold boom extension (26' – 45') with 0°, 15° and 30° offset. Maximum tip height of 155.5 ft.



SRC840 MAIN BOOM - ON OUTRIGGERS - FULLY EXTENDED, 360°												
		Main Boom							Outriggers Fully Extended		360°	
RADIUS FT	Boom Length - Feet											
	32.8	40	50	60	70	80	90	103.4				
10	80000 (65)	50690 (70)	48720 (74.5)									
12	69680 (61)	50690 (67)	48720 (72.5)	46400 (75.5)								
15	55990 (54.5)	48390 (62)	44090 (68.5)	41880 (72.5)	40630 (75.5)							
20	40120 (41.5)	36740 (53)	35270 (62)	34830 (67.5)	32540 (71)	31180 (74)	22920 (76)					
25	30040 (21.5)	28130 (42.5)	26790 (55)	28760 (62)	27080 (66.5)	25820 (70.5)	20720 (73)	18950 (76)				
30		22310 (28.5)	20130 (47)	22940 (56)	22880 (62)	21830 (66.5)	18180 (69.5)	17410 (73)				
35			15670 (38)	18790 (50)	18950 (57)	18680 (62.5)	15650 (66)	15540 (70)				
40			12480 (25.5)	15170 (43)	15380 (52)	15530 (58.5)	13880 (62.5)	13660 (67)				
45				12230 (34.5)	12380 (46)	12490 (54.5)	12320 (58.5)	12160 (64)				
50				9870 (23)	10180 (39.5)	10250 (49.5)	10270 (54.5)	10270 (60.5)				
55					8320 (32)	8480 (44)	8500 (50.5)	8530 (57)				
60					6820 (23)	7050 (38)	7090 (45.5)	7140 (53.5)				
65						5820 (30.5)	5950 (41)	5990 (50)				
70						4800 (21)	4980 (35)	5020 (46)				
75							4100 (28.5)	4230 (41.5)				
80							3370 (19.5)	3520 (36.5)				
85								2860 (31.5)				
90								2310 (24.5)				
95								1800 (14.5)				
MIN BOOM ANGLE	0°	0°	0°	0°	0°	0°	0°	0°				
PARTS LINE	8	6	6	4	4	4	4	4				

Boom Angle	Main Boom Length - Feet							
	32.8	40	50	60	70	80	90	103.4
0°	25350 (26.5)	18730 (33.7)	12670 (43.7)	8520 (53.7)	5930 (63.7)	4180 (73.7)	2900 (83.7)	1660 (96.8)

WORKING RANGE DIAGRAM  
 (BOOM DEFLECTION NOT SHOWN)  
 SANY SRC840



\*This material is supplied for reference only. Operator must refer to Crane Rating Manual and Operator's Manual to determine allowable crane lifting capacities and assembly operating procedures.